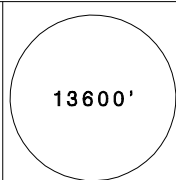
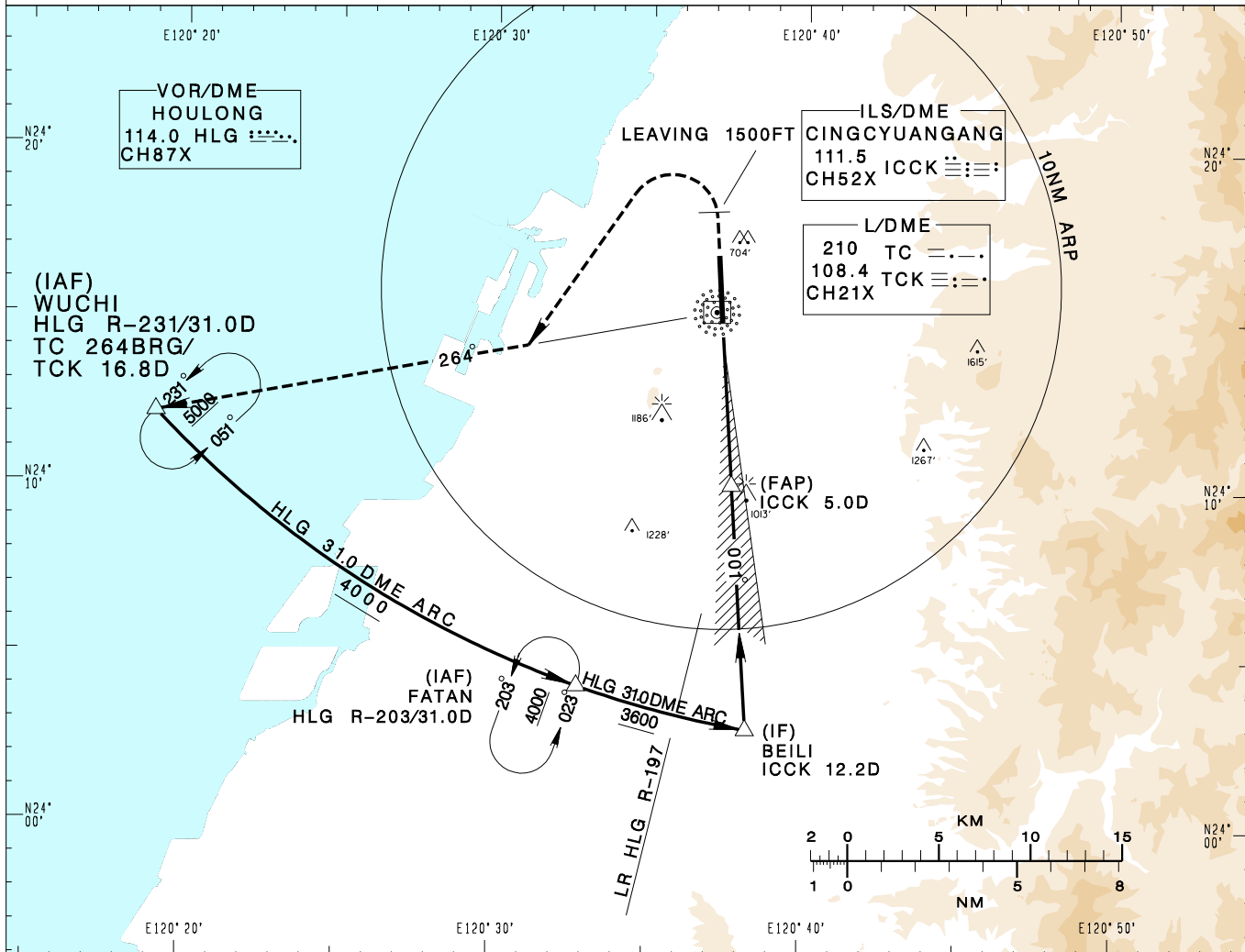


臺中/清泉崗機場
TAICHUNG/CINGCYUANGANG AD

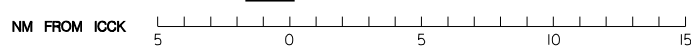
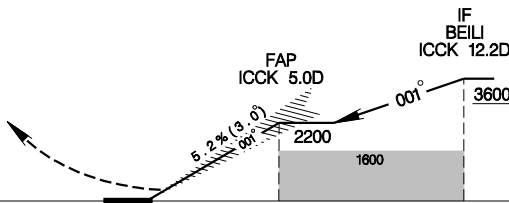
RCMQ
ILS Z RWY36

TAIPEI APP 130.1 129.6	TAICHUNG TWR 118.75 120.25	ATIS 127.75		
Apt Elev: 665'	Rwy36 THR Elev: 663'	Trans Level: FL130		Trans Alt: 11,000'
BEARINGS ARE MAGNETIC; DISTANCES ARE NAUTICAL MILES; ELEVATIONS, HEIGHTS IN FEET				



CHANGES: UPDATE MAG VAR AND LEG CRS; CHG MSA REF

MISSED APCH:
CLIMB RWY HDG TO 1500FT,
TURN LEFT TO TRACK
TC 264BRG TO WUCHI;
CLIMB TO 5000FT AND HOLD.



MINIMA (OCA IN FT, VIS IN M, OCH IN FT)					NOTE 1. CIRCLING NOT AUTHORIZED EAST OF RWY. 2. ⊕: APPROACH IS FLOWN USING A FLIGHT DIRECTOR, HUD OR COUPLED TO AN AUTOPILOT. *DME REQUIRED.
CATEGORY	A	B	C	D	
STRAIGHT IN	863/RVR ⁸⁰⁰ 750 200	863/RVR ⁸⁰⁰ 750 200	863/RVR ⁸⁰⁰ 750 200	863/RVR ⁸⁰⁰ 750 200	
STRAIGHT IN ⊕	863/RVR 550 200	863/RVR 550 200	863/RVR 550 200	863/RVR 550 200	
STRAIGHT IN (ALS OUT)	863/RVR ¹²⁰⁰ 1200 200	863/RVR ¹²⁰⁰ 1200 200	863/RVR ¹²⁰⁰ 1200 200	863/RVR ¹²⁰⁰ 1200 200	
CIRCLING	1360/1900 695	1360/2800 695	1600/4400 935	1600/4800 935	